

ORION FLEX LEGION TURNTABLE PALLET WRAPPING SYSTEMS



Value Leader in a cost effective, rugged & reliable design.

The Flex Legion is the value leader in the semi-automatic stretch wrapping. With all the features you need to quickly, efficiently, and economically wrap pallet loads.

Built to last and for easy service, the Flex Legion features a robust Insta-Thread Carriage film delivery system, a structural steel framework that allows the machine to be moved from either front or back, AC motors with VFD controls, and automatic height photo-eye sensors that improves the precision application of programmed wraps for maximizing load containment and film yield.

THE INSTA-THREAD CARRIAGE

At the heart of the machine, the Legion is equipped with class leading film carriage technology, the Insta-Thread Carriage. This carriage provides a consistent film-saving 200% prestretch, and incorporates the same premium quality components found within the S-Carriage on other Orion Flex models. The automated film payout ensures consistent film payout regardless of load size and shape.

GENERAL FEATURES

- 4" Allen-Bradley, HD touch screen HMI
- Quick adjust dials for easy adjustment
- Premium efficiency AC motors with 15 RPM variable speed "soft start"
- Revo-Logic technology for precise film application with maximum load containment and film yield
- 4,000 lb. maximum load capacity utilizing Orion's class leading structural base.
- Film saving 200% powered film pre-stretch (80GA Film or Thinner)
- Automatic film payout
- Max load height 80" - standard, 110" – optional
- 60" diameter turntable for loads up to 55" x 55"
- Load with a pallet jack, electric walkie, or forklift

OPTIONS

- Extended Mast – 110"
- Special Load Height Photocell for dark/opaque loads
- 150% Prestretch (Above 80GA Film)
- Load Backstop
- Ramp



Orion Flex Legion Turntable Pallet Wrapping Systems

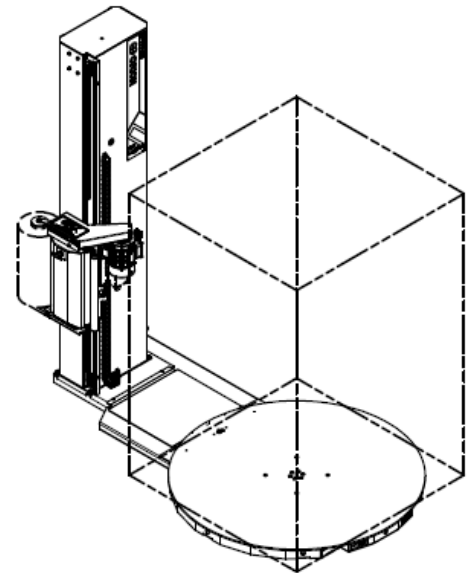
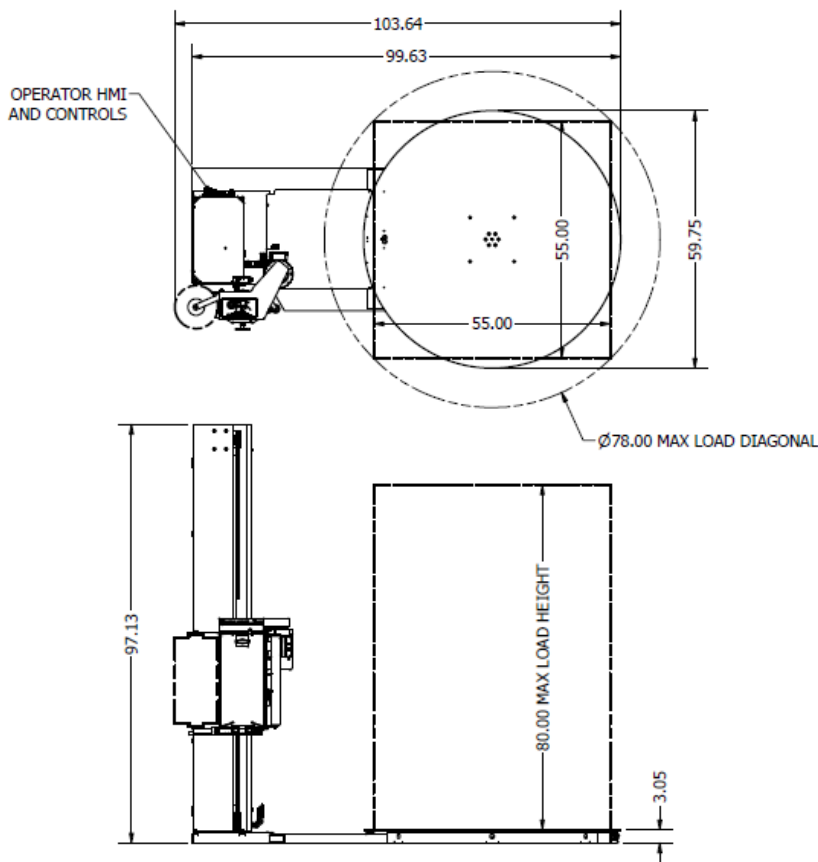
TYPICAL PRODUCT SPECIFICATIONS

Product Type	Turntable semi-automatic stretch wrapping machines
Speed	15 RPM
Display	4" Allen Bradley HMI
Frame	Heavy-duty welded tubular steel
Electrical Requirements	115/1/60, 15 Amp electrical service (Not suitable for GFIC)

SHIPPING WEIGHT

Legion	80" Mast Ships as 1 pc.	Weight 1,200 lbs.
	110" Mast Ships	Weight 1,300 lbs.

MACHINE DRAWINGS



©2026 Pro Mach Inc. ProMach reserves the right to change or discontinue specifications and designs shown in this brochure without notice or recourse. Orion Legion Turntable Pallet Wrapping Systems

4750 County Road 13 NE
Alexandria, MN 56308